



# START HERE: UNBOXING & SETTING UP



- 1. Inspect the outer carton for damage.
- 2. Refuse delivery if there is noticeable damage.
- 3. Using pliers, carefully remove the staples from the outer carton, as shown by arrows in the image above.
- 4. Slide the inner box out of the carton and remove additional packaging around the dispenser.
- 5. Lift the dispenser onto the counter.
- 6. Weighing 92 lbs, it is recommended that 2 people lift together.



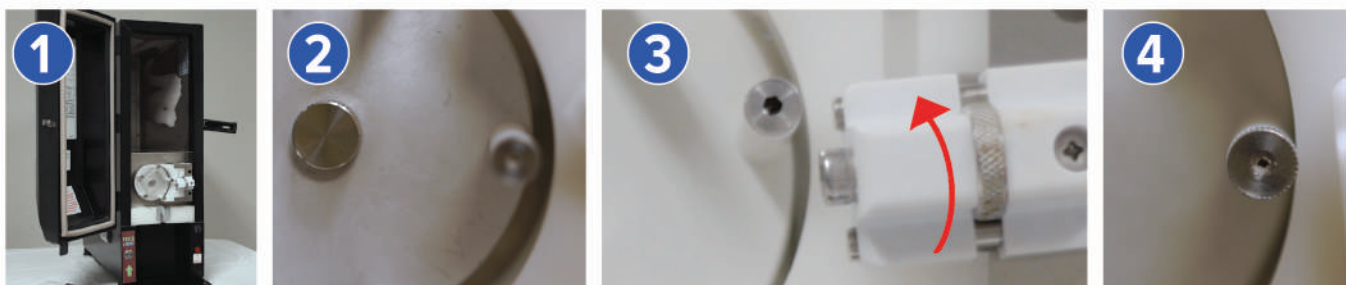
- 5. Remove all parts / packaging from inside the dispenser, including:
  - 1) Carrier Tray,
  - 2) Weighted Roller,
  - 3) Manuals,
  - 4) Flavor Cards,
  - 5) Tube Caps,
  - 6) Drip Tray.
- 6. Remove black caps from the "A" and "B" pins on the roller.
- 7. With the roller inserted into the carrier tray, place the tray into the dispenser.
- 8. Close the door to allow the carrier to cool.
- 9. Plug into 110v outlet with 13 amp circuit.
- 10. Turn the main power switch "ON".
- 11. Allow dispenser to cool to 40° or below before loading yogurt.



### IMPORTANT NOTES:

- Scan the QR / Watch all instructional videos at [YouTube.com/@perfectparfait6604](https://www.youtube.com/@perfectparfait6604)
- Retain and store all packaging materials for potential service returns.
- Contact Perfect Parfait if any parts are missing :  
(833) 727-3248 | [info@PerfectParfait.com](mailto:info@PerfectParfait.com) | [www.PerfectParfait.com](http://www.PerfectParfait.com)

## ADJUSTING THE HANDLE (BEFORE LOADING YOGURT)



**\*This should be performed every time a new bag of yogurt is installed.**

1. Open the dispenser door and turn the handle down to the locked position.
2. Rotate the pump wheel so one pin is at the center of the white curvature.
3. Rotate the silver wheel upward to close the gap between the pin and curvature.
4. When properly adjusted, the white curvature should barely touch the centered pin.

## HOW TO LOAD THE DISPENSER



- 1. Once cooled, remove the carrier from the dispenser. Remove one yogurt bag from the refrigerator with a new, wrapped tube.
- 2. Remove the cap from the bag and insert the tube into the bag. You should hear two clicks when fully inserted. Pull up on tube to ensure it's sealed.
- 3. With the carrier on its side, insert the yogurt bag into the tray, pulling the tube through the bottom opening.
- 4. Slide the tube into the guide track to lock the tube into place.



- 5. Pull the flap at the top of the bag over the tabs on the top of the yogurt carrier tray.
- 6. Place the roller on top of the yogurt bag, first inserting pin "B". and then pin "A".
- 7. Turn the handle up, insert the carrier, and feed the tube along the curvature, through the exit chamber.
- 8. Lock the handle and cut the tube 1/8" to 1/4" below the exit chamber.



- 9. Use the NSF / ETL compliant tube caps to prevent drips when not in use. (Always remove before use.)
- 10. Turn "ON" the dispense button switch at the start of service and "OFF" after yogurt service ends.
- 11. Remove the blue cap from the tube and begin using the dispenser.
- 12. Your dispenser set-up is now complete.

## MAINTENANCE



Using a warm cloth and approved disinfectant cleaner :

- **Daily:** Wipe clean the inside and outside of the drip tray and splash zone area.
- **Weekly:** Refrigerate the yogurt, and wipe clean the inside cavity, around the pump wheel, pins, drip tray, and splash zone.

## TROUBLESHOOTING



### Machine is on but not dispensing:

1. Ensure dispense switch is "ON."
2. Ensure portion control knob is turned all the way to the right.
3. Ensure door safety switch is contacting the door plate when closed.
4. Ensure tube is cut 1/8"-1/4" below exit chamber.
5. Ensure handle isn't overtightened.

### Yogurt is dripping or not flowing properly:

1. See the instructions for adjusting the handle.